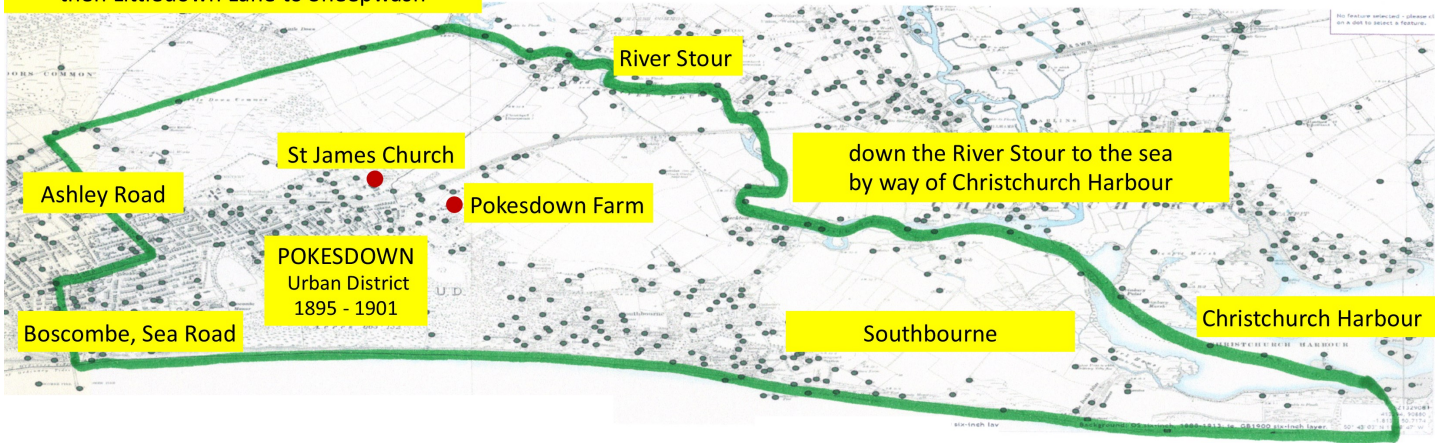


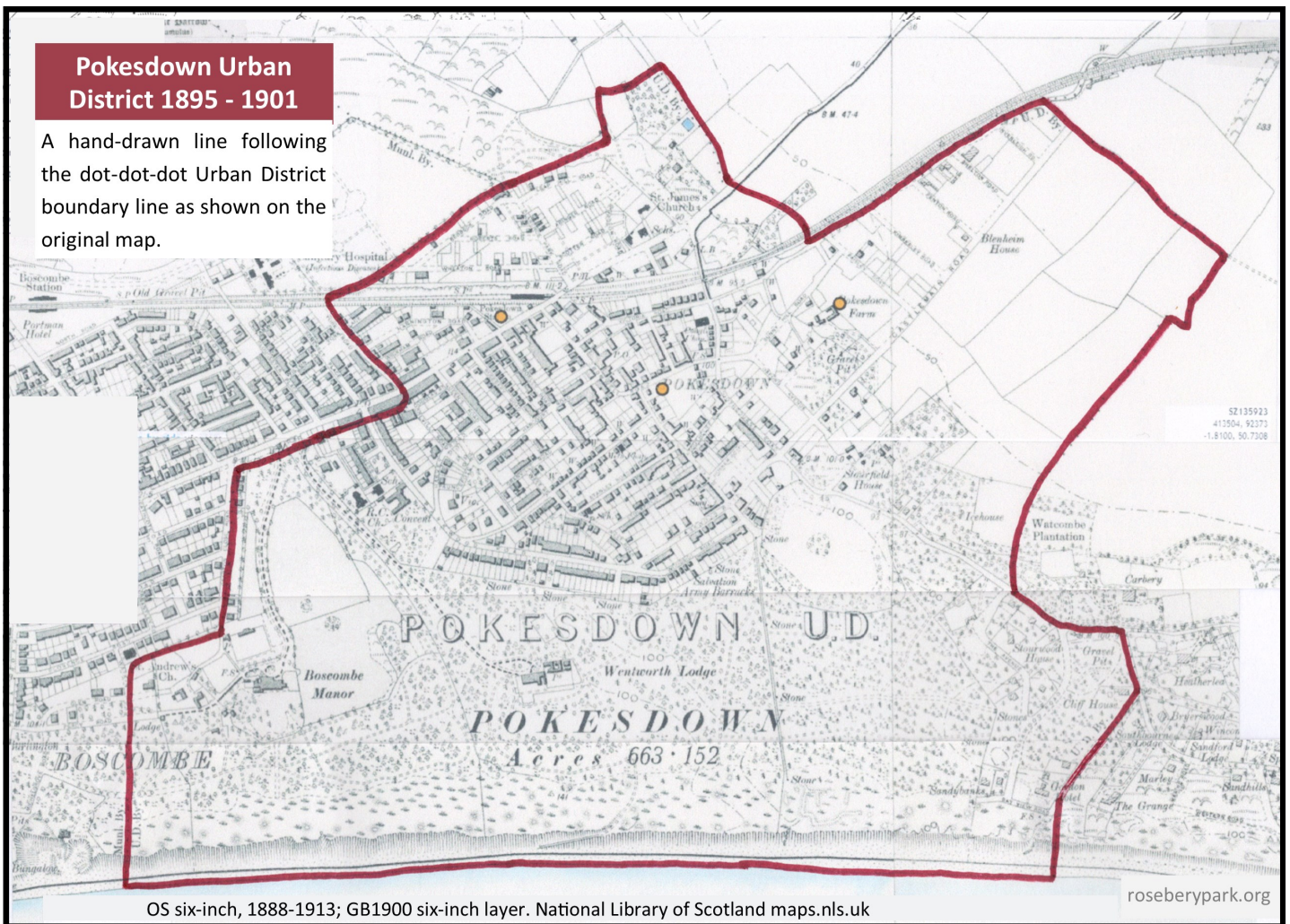
what is now northern border of King's Park,
then Littledown Lane to Sheepwash



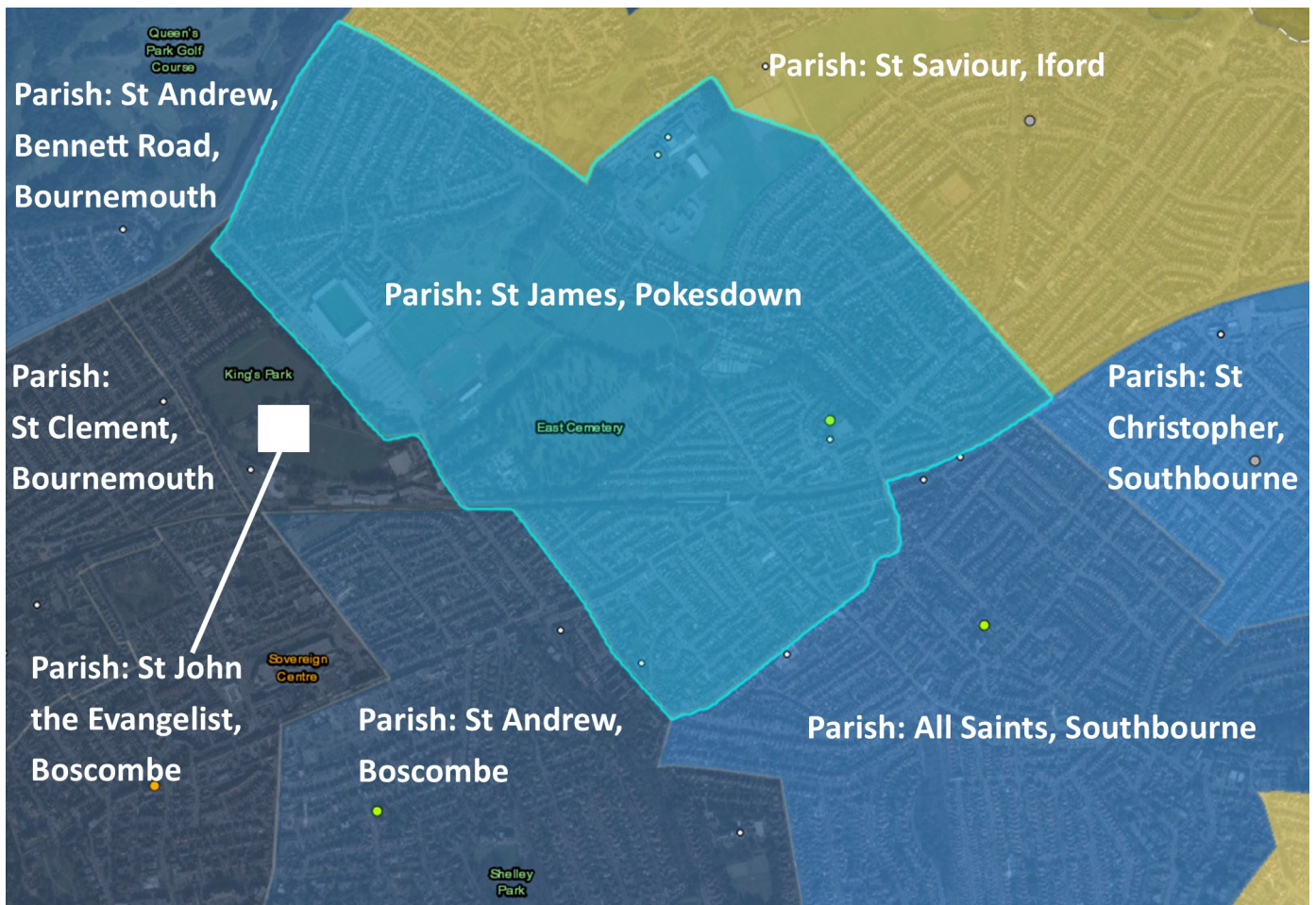
Boundary of the new Church of England ecclesiastical parish, St James, Pokesdown, created 1859.
On map OS six-inch 1888-1913. Based on description of boundary given by J.A. Young, Pokesdown Past 1750 to 1900, page 58.

roseberypark.org

(source of original map unknown)

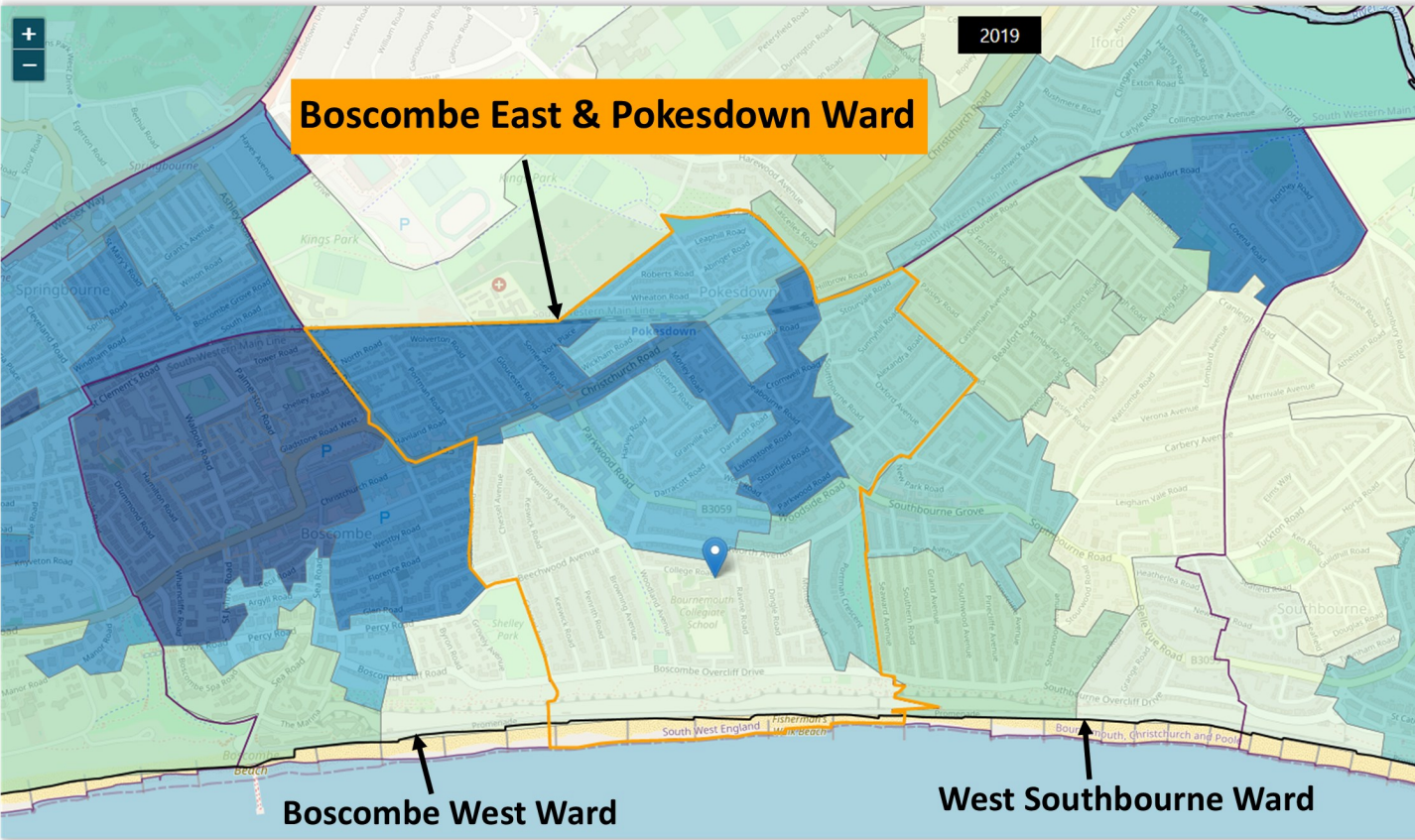


Original map source: <https://maps.nls.uk/geo/explore/#zoom=16&lat=50.72462&lon=-1.82877&layers=175&b=1>

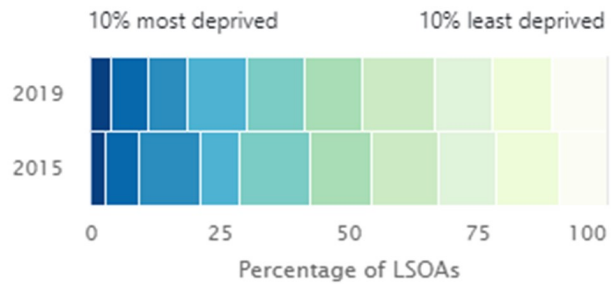


Church of England Parish Map 2020 from <https://hub.arcgis.com/datasets/67bce0ed36dd4ee0af7a16bc079aa09a>

From <https://hub.arcgis.com/datasets/67bce0ed36dd4ee0af7a16bc079aa09a?fullScreen=true&geometry=-1.866%2C50.724%2C-1.785%2C50.744>

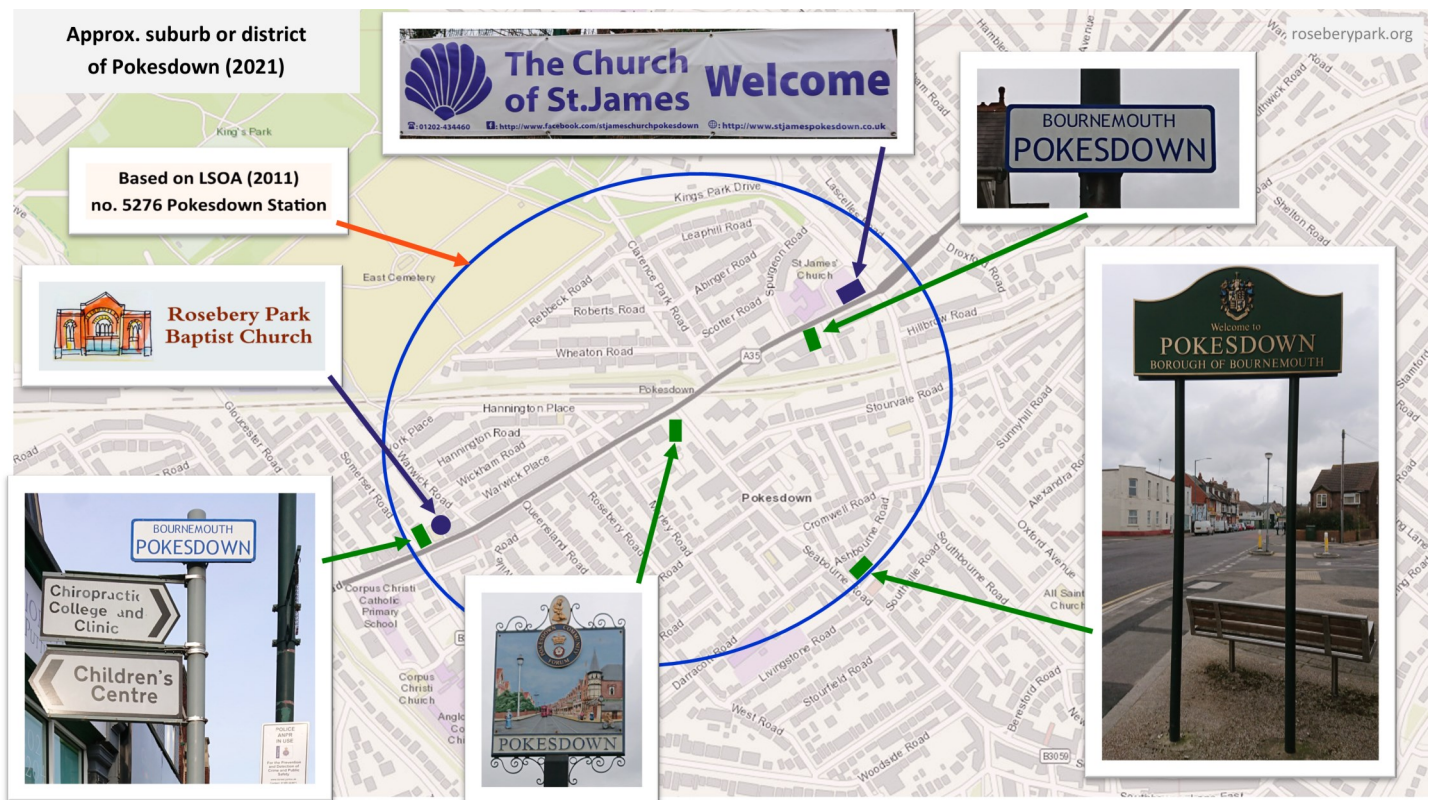


This chart shows the percentage distribution in 2019 and 2015 of LSOAs within Bournemouth, Christchurch and Poole, in each decile of the **Index of Multiple Deprivation (IMD)**.



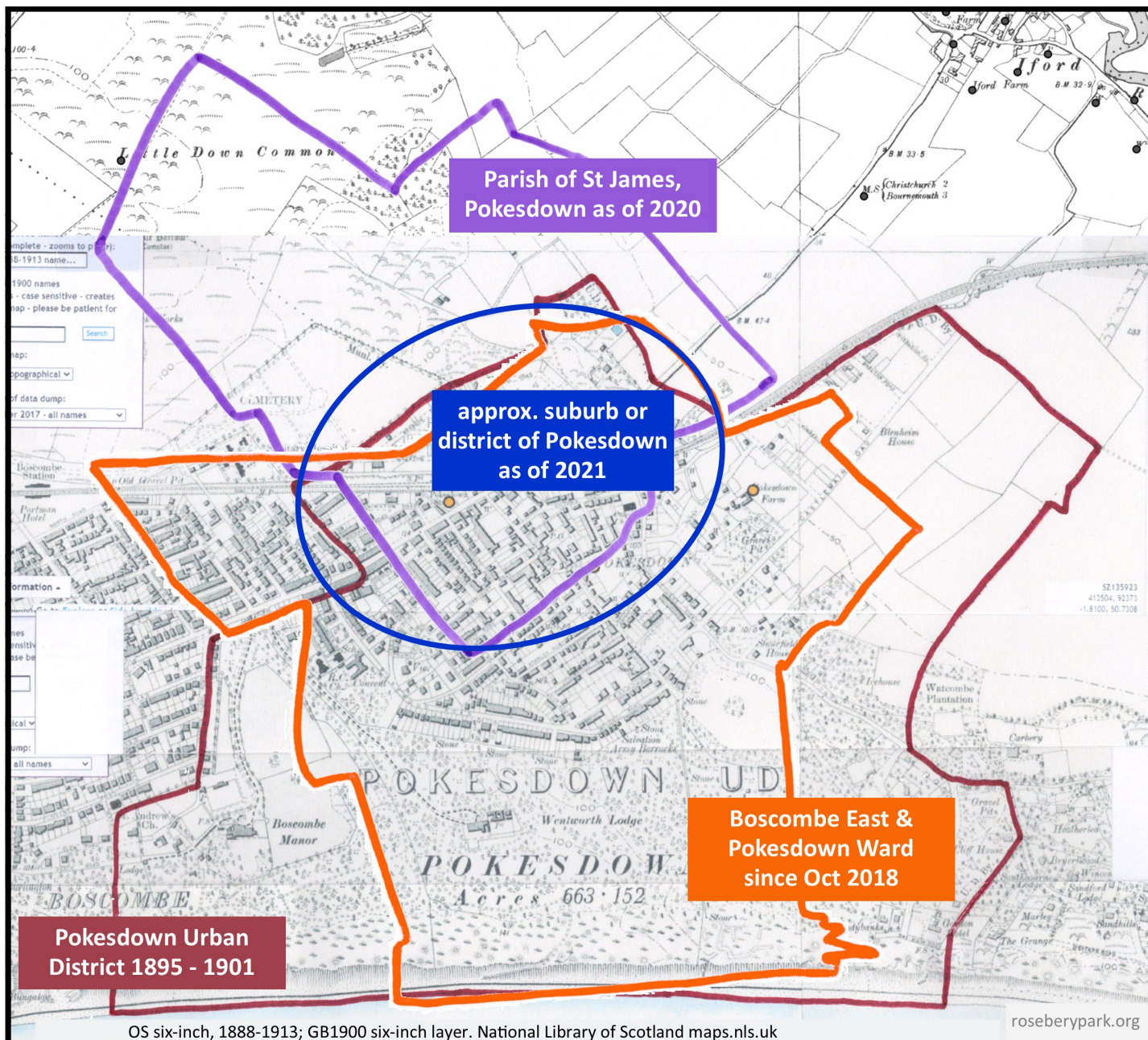
From <http://dclgapps.communities.gov.uk/imd/>

From http://dclgapps.communities.gov.uk/imd/iod_index.html



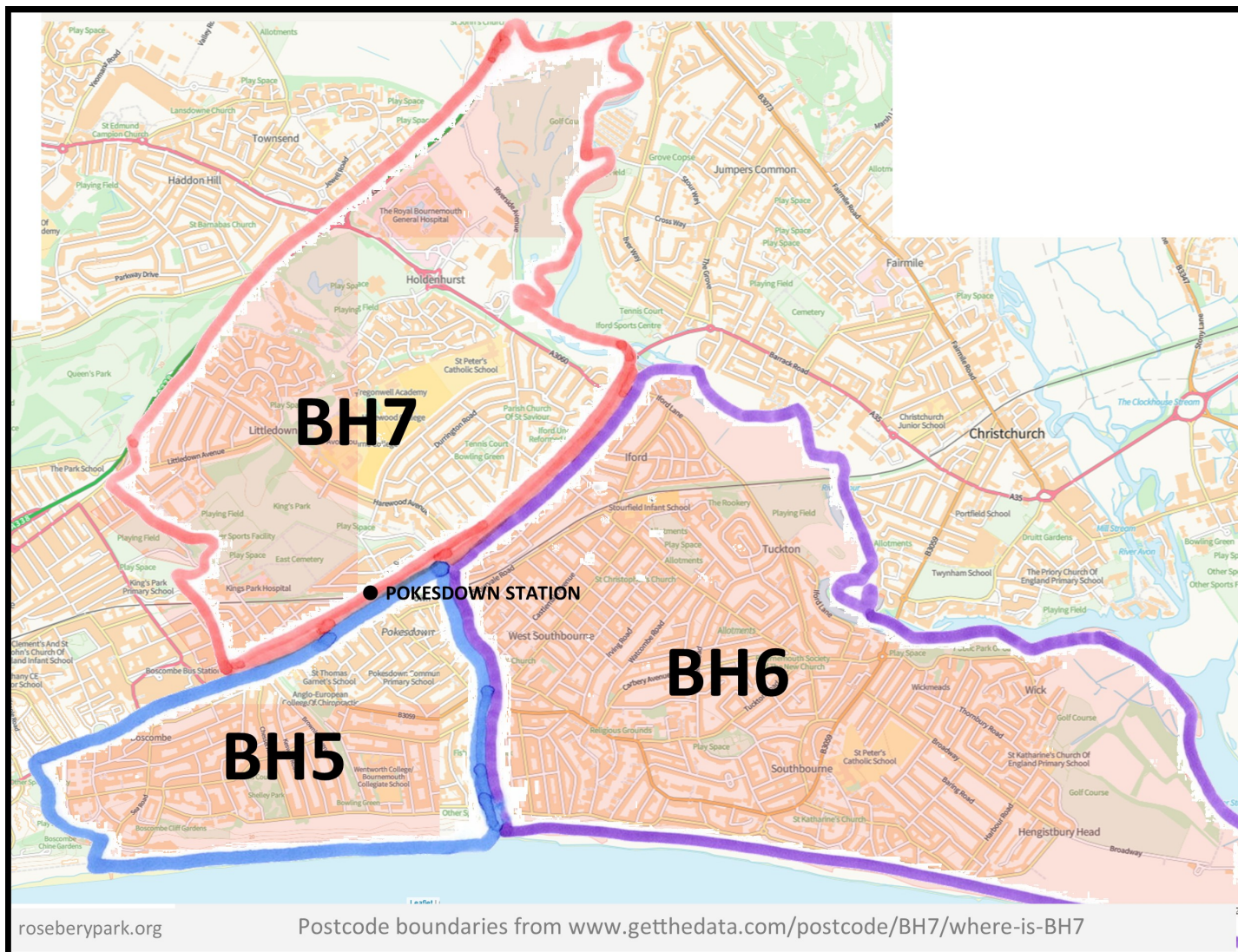
Map source: <https://maps.nls.uk/geo/find/#zoom=16&lat=50.73182&lon=-1.82465&layers=102&b=1&z=0&point=0,0>

Photos taken for RPBC



Original map source: <https://maps.nls.uk/geo/explore/#zoom=16&lat=50.72462&lon=-1.82877&layers=175&b=1>

This version showing four boundaries for Pokesdown created for
Rosebery Park Baptist Church by Michelle Fogg



from www.getthedata.com/postcode/BH7/where-is-BH7

The History of Rosebery Park Baptist Church and Pokesdown – Pokesdown: its boundaries.

Author: Michelle Fogg.

Date: June 2021.

Url: <https://roseberypark.org/history/pokesdown-boundaries/>